

ASTANA INTERIOR

OFFICE

Gading Putih IV C3 / 1
Kelapa Gading, Jakarta 14240
Indonesia

T. (62-21) 450 7878

E. contact.astanainterior@gmail.com

www.astanainterior.com

COPYRIGHT

The content provided by here, unless otherwise noted, is copyrighted to PT Atelier Una Indonesia. All use is subject to the terms and conditions set forth below.

All materials contained on here, including all text and images, are copyrighted and are protected by applicable copyright laws. They may not be published, reproduced, copied, modified, uploaded, transmitted, posted, transferred or distributed in any way, without PT Atelier Una Indonesia's ("una") prior written consent.

Illustrations, photographs, computer drawings, etc. may be the property of una, or illustrators and photographers hired by una, its clients and/or suppliers, and are used on here in accordance with individual agreements. una does not grant any express or implied right to you under any license, copyrights, patents or trademarks. No portion of these materials, including photography, may be reproduced without the express written consent of una.



ASTANA

ASTANA IS AN INTERIOR CONSULTANT AND DESIGN FIRM

Founded in 2011 by a group of individuals who have significant experience in this line of business, astana has been driven by a strong philosophy devoted to enrich human experience and the quality of the environment through its interior design works. With their expertise, astana aims to give its best contribution and services to the clients. Since then, astana has been renowned for bringing a combination of design, management, and technical expertise to every project.

The company has deep experience in a vast range of interior projects, including commercial, residential, hospitality, workspace, educational, and furniture design.

Providing professional interior design services, the work scope of the firm comprises of providing design concepts, schematic designs, tender documents, construction drawings, and coordination during construction.

One of the most important factors in the success of astana has been the ability to provide interior design services for a diverse range of clients in widely various sectors, functions, scales, and locations. By that, it has established a nationwide reputation by doing many projects across the region.

Core Values: C-R-E-A-T-I-V-E

- > Credible
Uphold the competence and professionalism.
- > Result
Strive to give the best output.
- > Excellence
Perfection is key.
- > Added value
Benefit in all related aspect.
- > Team work
Comprehensive process involving best talents.
- > Innovative
Deliver fresh ideas.
- > Visionary
To imagine and inspire.
- > Evolve
Adaptive to the always dynamic condition.

DESIGN STYLE

When it comes to design philosophy, astana is not bound by any grand idealisms or specific style inclinations. It is key to design relevantly. The design is front and foremost, contextual, in such a way that it fulfills all the necessary requirements : it fulfills the client's needs, serves the requirements, has aesthetic values, and is possible to be realized. By working with clients to understand their needs, budget requirements, location context, and organizational goals, rather than providing readymade, conventional solutions, astana is able to adapt to the changing and developing needs of clients, regardless of the nature of their project.

astana's successful completion of projects affords the firm a host of return clients, it illustrates the reliance of clients on astana's expertise, engaging the practice in multiple design projects.

GOOD DESIGN IS GOOD BUSINESS

Design must reflect the practical and aesthetics in business. By focusing into specific field, more benefit in the term of business is achievable, and the first step is try to understand the business itself. Without those understanding, most of the design will fail. Great design will not sell an inferior product, but it will enable a great product to achieve its maximum potential.

TALENTS

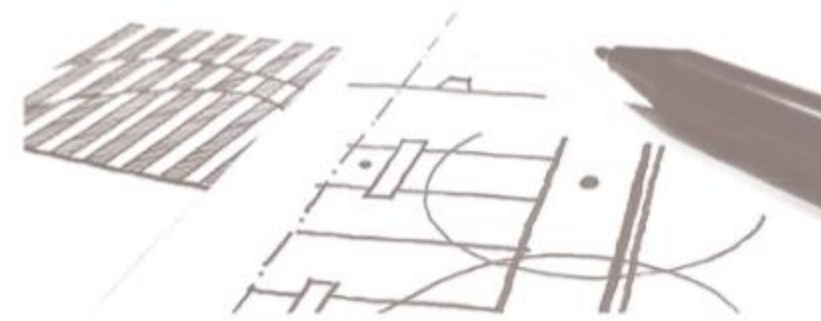
astana team consists of professionals with creative and idealistic minds, committed to design excellence, innovation, and sustainability, to look for and create solutions for each project. Best design occurs when individuals come together, challenging each other to invent new techniques, and search for new expressions. In astana, passionate interior designers work alongside the most experienced hands, blending wisdom with fresh inspiration.

In top management level, astana consisted of skilful leaders who have the knowledge in conceptual as well as technical and coordination. The management board guides the strategic direction of practice.

SUSTAINABLE DESIGN

As an interior consultant, astana fully recognize the important role in preserving and protecting the environment.

It is important to develop environmentally-friendly properties that encourage a green lifestyle.





PROJECT HIGHLIGHTS

NUTZ APPAREL STORE
FILA STORE
WEDDING CONCEPT
BLACKBERRY FLAGSHIP STORE
J.Co + MAKU
ICEWATCH STORE
GOLD'S GYM
GRAPARI TELKOMSEL
MMF OFFICE

GAPURA ANGKASA OFFICE
BRI CORPORATE UNIVERSITY
WHIZ PRIME HOTEL PADANG
PUTRI DUYUNG RESORT
ROCKY PLAZA HOTEL
FAME HOTEL JAYAPURA
ATRIA BALLOOM SERPONG
FAVE HOTEL PEKANBARU

RESIDENCE AT KELAPA GADING
APARTMENT AT KARAWANG
APARTMENT AT SOMERSET
APARTMENT AT JATIWARNA
BAIT BENAYAH
REOG INTERIOR SERIES



NUTZ APPAREL STORE
eX PLAZA INDONESIA, JAKARTA

FILA STORE
PARIS VAN JAVA, BANDUNG

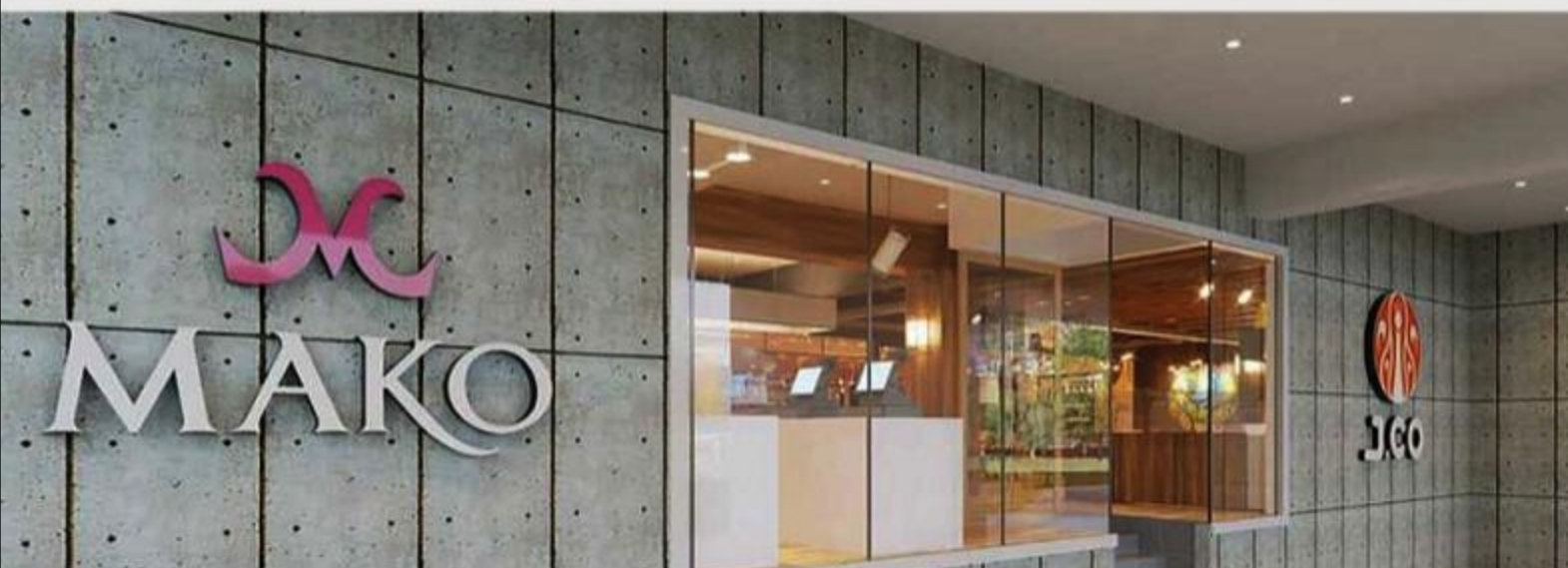




■ **WEDDING CONCEPT** BY DEDEN SISWANTO, JEANNY ANG, RUDY CHANDRA
MALL OF INDONESIA, JAKARTA

■ **BLACKBERRY FLAGSHIP STORE**
(VARIOUS LOCATIONS)





■ J.Co + MAKO
(VARIOUS LOCATIONS)



■ ICE WATCH
GRAND INDONESIA, JAKARTA

■ GOLD'S GYM
MAL CIPUTRA, MAL BALEKOTA



■ MANDALA MULTIFINANCE OFFICE
CIDENG, JAKARTA

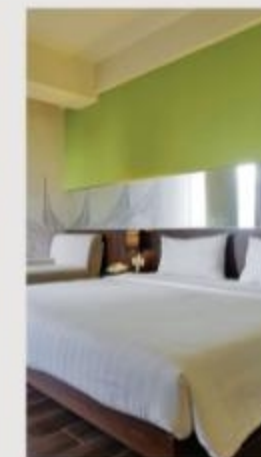


■ GRAPARI TELKOMSEL
{ VARIOUS LOCATIONS }

GAPURA ANGKASA HEAD OFFICE
KEMAYORAN, JAKARTA



■ BRI CORPORATE UNIVERSITY
RAGUNAN, JAKARTA



■ WHIZ PRIME HOTEL PADANG
PADANG, WEST SUMATRA



■ PUTRI DUYUNG RESORT
ANCOL, JAKARTA

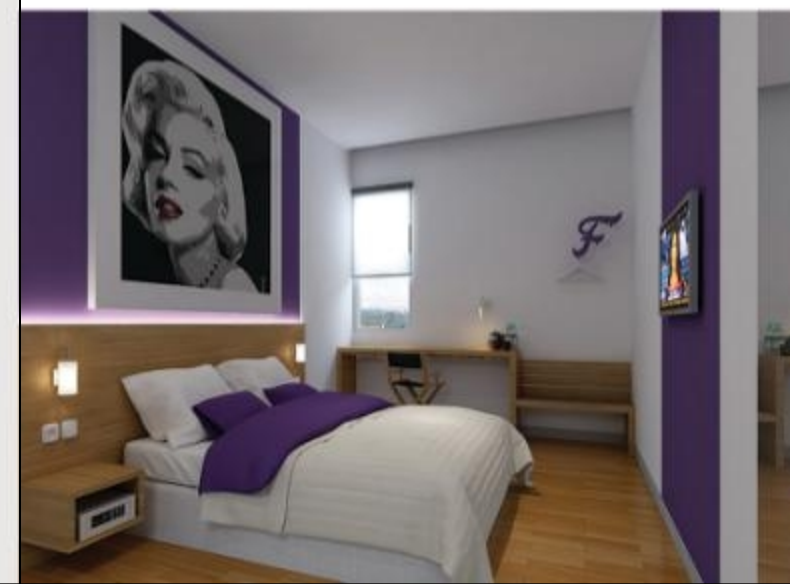
FAME HOTEL JAYAPURA

JAYAPURA, PAPUA



ROCKY PLAZA HOTEL

PADANG, WEST SUMATRA





■ ATRIA HOTEL SERPONG BALLROOM & EXTENSION
SERPONG, TANGERANG

■ FAVE HOTEL PEKANBARU
PEKANBARU, RIAU





RESIDENCE AT KELAPA GADING

KELAPA GADING, JAKARTA

APARTMENT AT KARAWANG

KARAWANG, WEST JAVA



APARTMENT AT SOMERSET

PERMATA HIJAU, JAKARTA



APARTMENT AT JATIWARNA

JATIWARNA, BEKASI



■ BAIT BENAYAH
PULOMAS, JAKARTA

■ REOG INTERIOR SERIES
(THEMATIC INTERIOR COLLECTION)

